

# EtherCrypt U1000 QR



## High Performance L2 Encryptor

EtherCrypt U1000 QR is a layer-2 encryptor that protects the transmission of sensitive data over 1Gbps ethernet and metro-ethernet networks. It offers full duplex encryption up to 1Gbps using the AES-256-CFB algorithm, and is suitable for point-to-point, point-to-multipoint and fully-meshed ethernet networks.

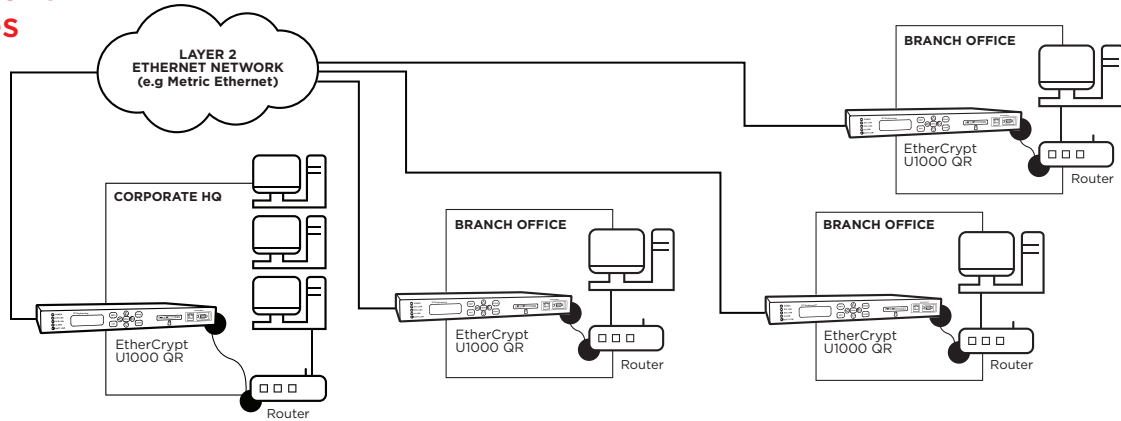
EtherCrypt U1000 QR can be easily deployed into existing networks without any need to change the network configuration. It supports unicast, multicast and broadcast ethernet frames. Designed to the strictest security standards, EtherCrypt U1000 QR includes a tamper-resistant chassis, emergency erasure and active zeroisation. In addition, it comes with in-built over temperature detection.

EtherCrypt U1000 QR may also be upgraded to quantum cryptography through the addition of a quantum key distribution (QKD) server that is based on ETSI standards. The solutions are quantum-safe for the long-term protection of sensitive and high-value data.

### Key Features

- High-assurance encryptor
- 1Gbps throughout
- Over temperature detection
- Emergency erasure button

## Deployment Use Cases



## Specifications

<b>Performance</b>	Full duplex operation at speeds up to 1Gbps
<b>Network Interfaces</b>	Network: Ethernet II, IEEE 802.3 Gigabit ethernet ports with SFP interface (single mode, multi mode and copper)
<b>Cryptography</b>	AES 256 CFB mode Supports customised algorithm Support for QKD
<b>Key Management</b>	Proprietary key management Parameter loading using smartcard Automatic and transparent session key negotiation
<b>Device Management</b>	Local console port (9 pins D serial port) 100 Base-T RJ45 Ethernet port - for remote monitoring SNMP V2c (operates with standard SNMP network management station)
<b>Physical Security</b>	Tamper resistant chassis Tamper detection and response Active zeroisation of cryptographic data upon tamper detection User PIN protected front panel menu High temperature detection Emergency erasure function
<b>Operating Environment</b>	Operating temperature: 0°C to 40°C Relative humidity: 0 to 90% Storage temperature: -20°C to 65°C Meets FCC Part 15, Class B EMI/RFI requirements
<b>Physical Characteristics</b>	Dimension: 420mm (W) x 270mm (D) x 44mm (H) Weight: 3Kg Redundant hot-swap PSU module options: 1) 100-240V AC @ 50/60Hz 2) 36-72V DC, 300W
<b>Networking Features &amp; Protocols</b>	Supports Ethernet Layer 2 encryption Point-to-point, point-to-multipoint, multipoint-to-multipoint meshed networks Unicast, multicast and broadcast ethernet frames
<b>Security/Configuration</b>	Automated power-up self tests Alarm/Audit log messages stored in memory with date and time LED indicators for link status monitoring Front panel menu-driven setup Battery backup of cryptographic variables
<b>Optional</b>	
<b>Key Management System (KMS)</b>	Windows-based software system for key exchange parameter generation
<b>Smartcard</b>	Configuration card for user authentication and cryptographic key parameters
<b>Feature</b>	Supports customised algorithm loading feature